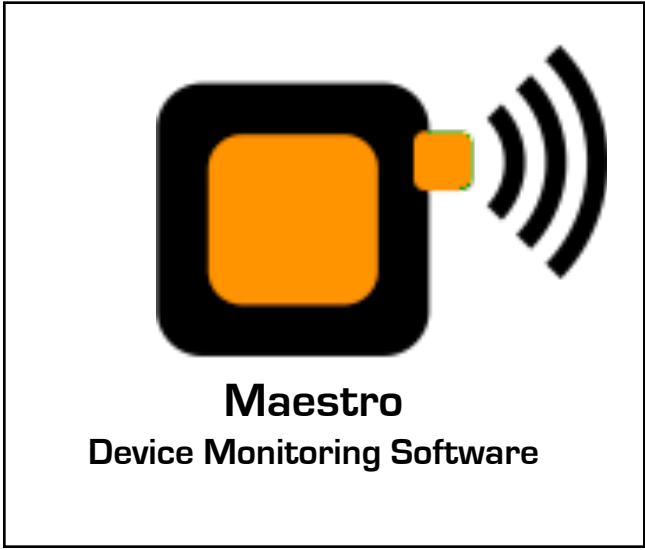




# Product Manual

## Maestro

[www.CalypsoControl.com](http://www.CalypsoControl.com)  
[Sales@CalypsoControl.com](mailto:Sales@CalypsoControl.com)  
[Support@CalypsoControl.com](mailto:Support@CalypsoControl.com)



**Calypso Control Systems, LLC**  
944 O'Keefe Road  
Hudson, Wisconsin 54016 USA

(888)381-9646



<b>Chapter 1: Introduction to Maestro</b>	<b>3</b>
<b>1.1 Maestro Overview</b>	<b>3</b>
<b>1.2 Installing the Software</b>	<b>3</b>
<b>1.3 Defining your Environment</b>	<b>4</b>
<b>1.4 Enabling Your ION-LT for Maestro</b>	<b>6</b>
<i>1.4.1 ION-LT Event Database Entries</i>	<i>6</i>
<i>1.4.2 Loading the Projector Driver</i>	<i>6</i>
<i>1.4.3 Setting Default Preferences</i>	<i>7</i>
<i>1.4.4 Changing Default Settings</i>	<i>8</i>
<b>Chapter 2: Monitoring Devices</b>	<b>9</b>
<i>2.1 The Details Tab</i>	<i>9</i>
<b>Calypso Control Systems 3-year Product Warranty Statement</b>	<b>11</b>

# Chapter 1: Introduction to Maestro

## 1.1 Maestro Overview

Maestro software addresses the challenges associated with efficiently managing the rapidly expanding collection of audio-video equipment found in education, corporate and other markets.

Maestro provides users of AV technology the tools needed to centrally monitor and control projectors, displays, audio and video conferencing systems, audio amplifiers, DVD players and more. Designed to work seamlessly with Calypso Control Systems' network-based device controllers, such as ION and Pro I/O, the browser-based Maestro Console monitors and reports on the real-time status of items such as projector lamp and filter hours and power and input status, while providing an interface for immediate or scheduled control of all attached equipment.

Much of Maestro's ease of use and flexibility is due to the manner in which it takes advantage of Calypso's basic controller architecture, which minimizes network traffic by transmitting data to the Maestro Server only when an exception occurs. In addition, Maestro provides automated email alerts for user-defined exception conditions (e.g., projector bulb life has reached 1000 hours), tools for basic asset management and maintenance scheduling, usage logging, reporting and more.

## 1.2 Installing the Software

Maestro is a Java based application that will run on Windows based PC's or OSX based Apple computers. To install Maestro follow this procedure:

- Open Maestro Folder
- Double-Click on the Maestro Icon (Circled in Red, Fig. A)



Fig. A

You will see the screen pictured in Fig. B

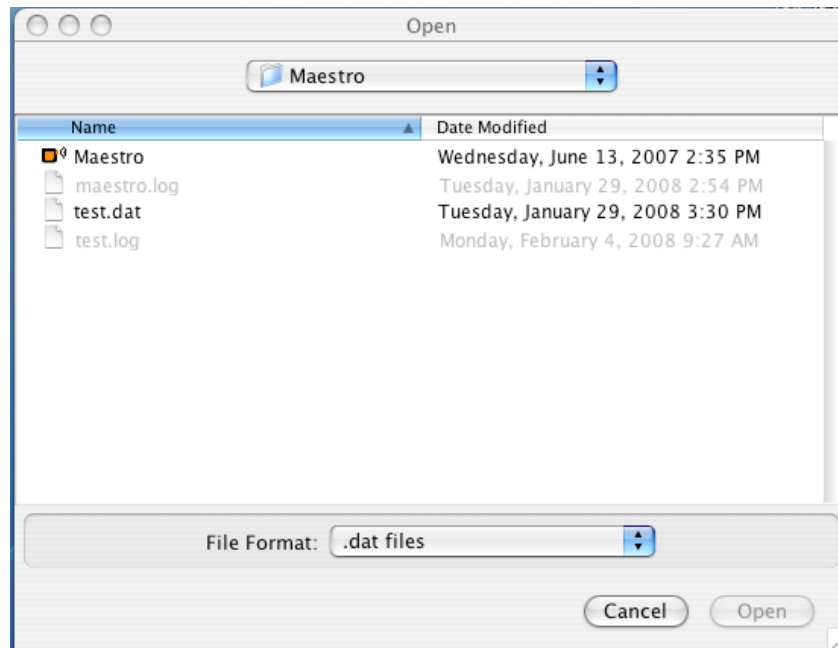


Fig B.

You will see the **Maestro** dat file at the top of the list, this file is a default example only . Choose **[Cancel]** and you will be able create a file related to your specific environment.

### 1.3 Defining your Environment

Maestro allows two ways to define your environment, **Groups** and **Units**. *Groups* and *Units* can be used together to define more complex environments. As an example, a *Group* could be defined as a hallway, wing or separate building while the *Units* will indicate the Calypso ION-LT2 controller within that *Group*. (See Fig C.)

Fig. C

Group A	RM 101 RM 102 RM 105
Group B	RM 208 RM 212
Group C	Gym Library Lecture Hall Teachers Lounge

Operating environments can vary greatly so we've opted to make *Groups* and *Units* operate independently. You can create *Units* and *Groups* at the same time or assign them at a later time. We recommend that you start by adding Units to the right pane of the window shown in Fig. D.

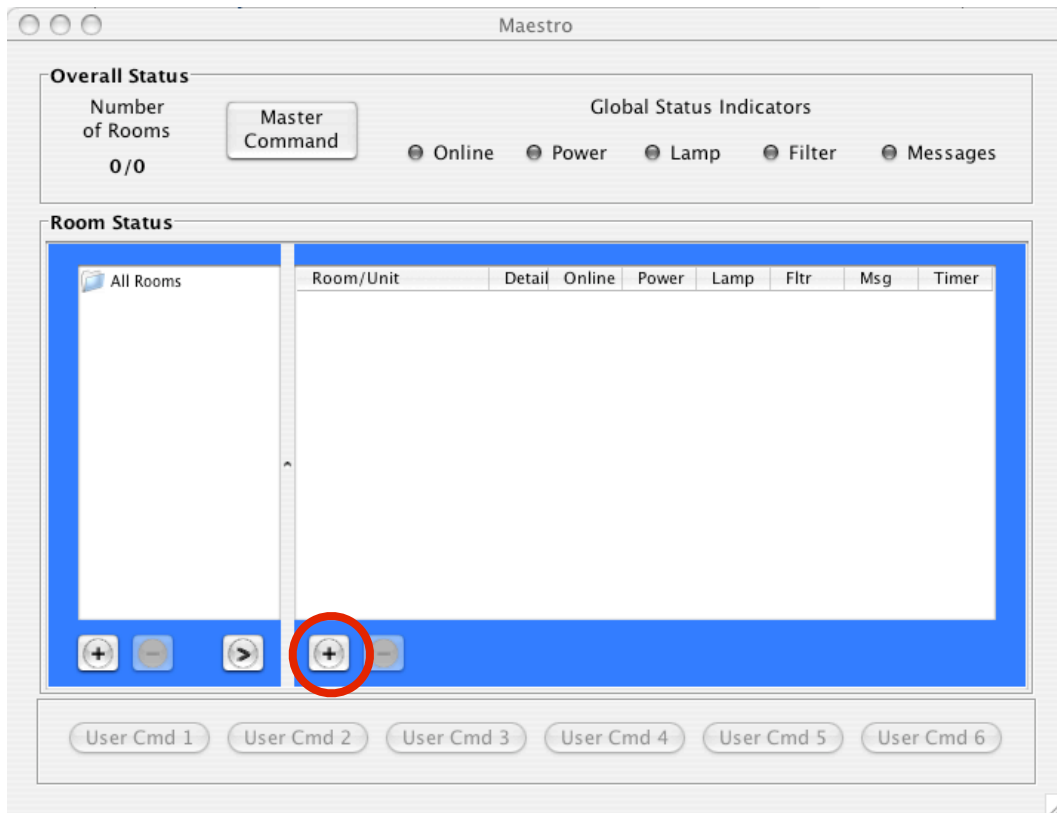


Fig. D

Select the [ + ] on the *Room/Unit* pane to add a *Unit*. The window shown in Fig. E will open:

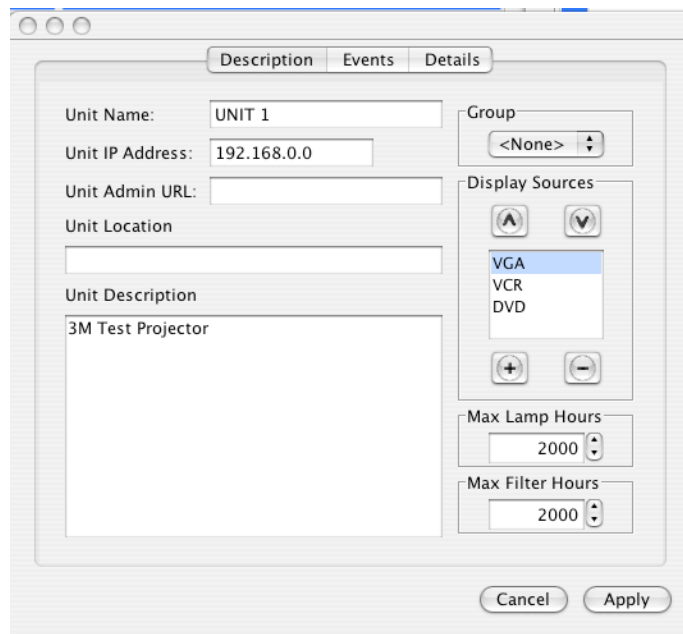


Fig. E

The window in (Fig. E) defaults to the *Description Tab*, this tab is used to enter information about the Unit you are monitoring. You need to enter a Name, Target IP Address, location, description, etc.

Give your device or room a name and set the IP Address to point to the target ION-LT. Select the **[Apply]** button. You should now see the Unit you added on the main screen (Fig. D). If the software is correctly configured you should see a green indicator in the **Online** area of the **Global Status Indicator** (Fig. F). This signals that you have an active connection with the ION-LT2.

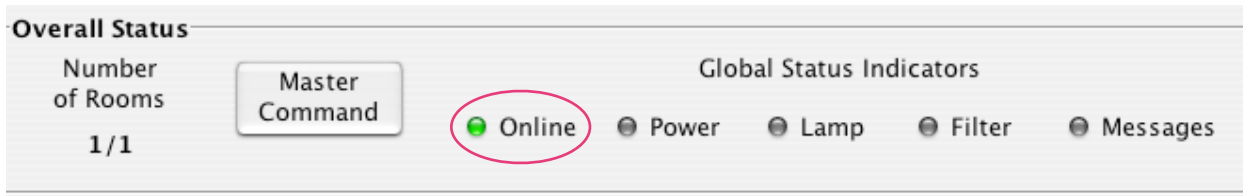


Fig. F

## 1.4 Enabling Your ION-LT for Maestro

Now that you're successfully communicating with your ION-LT, you must enable it for use with the Maestro. Maestro requires specific entries in the Event Database and a Calypso-supplied driver specific to your projector.

### 1.4.1 ION-LT Event Database Entries

Most ION-LT's come with a pre-loaded event database that includes entries specific to the Maestro. Events 115 - 126 of the ION-LT2 event database are reserved for use with the Maestro. If you log into your ION-LT and look at the database you should see these Maestro-specific events populated with information.

**Note:** Any Maestro Events with "#NET" commands will need to have IP Addresses that point back to the IP address of the computer running your Maestro Server.

**Note:** If Events 115 - 126 are missing please contact a Calypso Technical Support Engineer.

### 1.4.2 Loading the Projector Driver

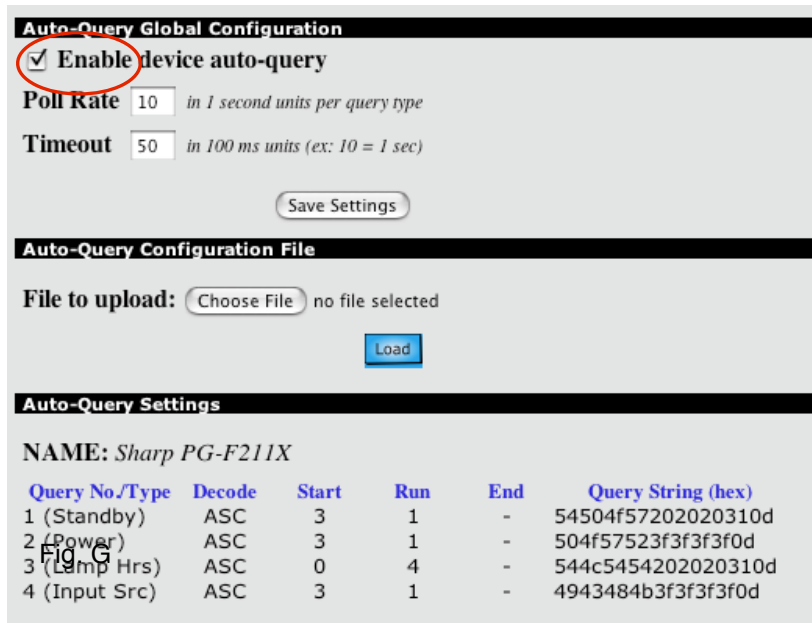
Calypso is committed to developing drivers to support the projectors you have deployed. We have a library that contains most projectors currently in use. If your projector is missing from our library we'll create a driver for it and add it to our library. Calypso will supply you with a disk that contains your projector-specific driver. You will need to load the driver into your ION-LT2 using the following instructions:

1. Log into your ION-LT2 using the web interface
2. Select **Device Auto-Query** from the left menu panel

The *Auto-Query Configuration* window should open (See Fig. G). The window displayed in Fig. G has projector configuration settings already loaded -- you'll see them at the bottom of the *Auto-Query Settings* window in the example. *Please note: your settings window will likely not be populated with data.*

3. Place the Calypso-supplied driver CD into your computer.
4. Select **[Choose File]** from the *Auto-Query Configuration File* section of the window.
5. Choose the ".aqc" file from the CD and select the **[Load]** button
6. Enable *device auto-query* by checking the box
7. Select **[Save Settings]** button

Your ION-LT2 should now be enabled for use with Maestro. Your *Auto-Query Configuration* window should now resemble the one in Fig. G.



### 1.4.3 Setting Default Preferences

Maestro Preferences are available to provide global control of default settings that address issues like security, email notifications and other device specific settings as needed. Preferences related to unit settings are intended to define the default values for any *units* created after those preferences are set. These are global settings, but you can override them by changing the settings on a per-device basis. **Preferences must be set prior to adding units for them to take effect.**

**Server Tab** -- This *Tab* gives a qualified IT person the ability to change Port Settings related to network communications. These should only be altered if a conflict exists with internal network port usage. You may also enable security from this *Tab*.

**Email Tab** -- Gives you an opportunity to set-up email notifications based on user-defined error states.

**User Cmds Tab** -- This *Tab* allows setting device specific, global commands. There are six **User Commands** available from the *Details Screen*. Firing one of these commands will affect every device related to the called event across all *Units* in the currently defined active *Group*. Actions are defined by calling a specific event from the ION-LT2 event database.

**Unit Description Tab** -- This *Tab* allows you to set specific projector information. You may also set Lamp Hour and Filter Hour maximums (used for lamp status and alerts).

**Unit Events Tab** -- Items on this *Tab* are specific to Maestro events in your **ION-LT2 Event Database**. Under most circumstances these should not be changed. The **Master Command** is the exception. This is configured to fire an event from the ION-LT2 Event Database to every *Unit* across all *Groups*.

**Unit Details Tab** -- Allows for the global customization of default button labels in the *Details Interface* and the events they are associated with in the ION-LT2 Event Database.

## 1.4.4 Changing Default Settings

If you have set up your devices with Global Defaults, as shown in *Section 1.4.3*, you may find circumstances that require you to alter these settings for a specific device. Settings can be changed for individual devices by **Double-Clicking** the device name (see Fig. H). This will open a window specific to the device you are working with. The same settings seen in the **Unit Preferences** of *Section 1.4.3* can be accessed on a *per device* basis from this window.

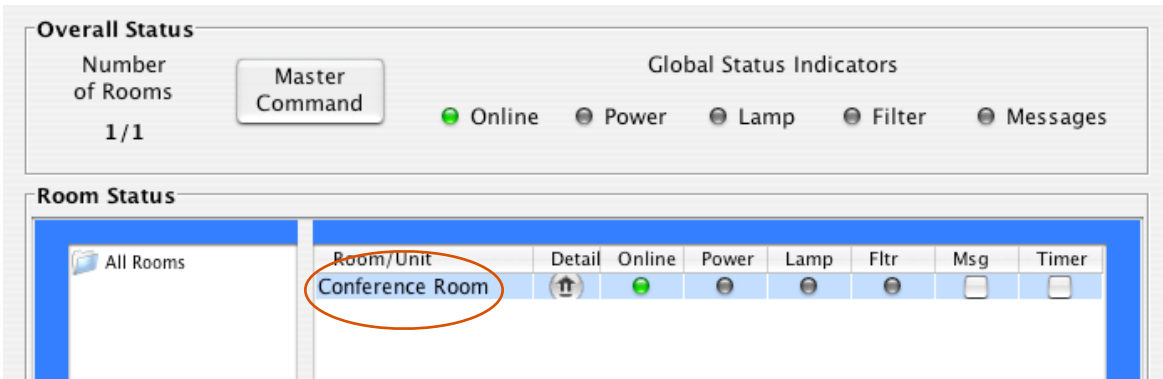
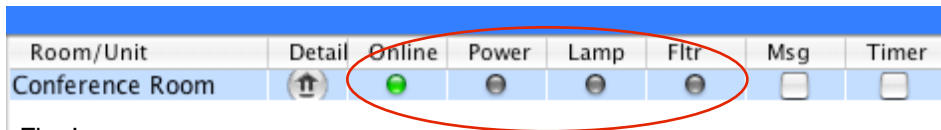


Fig. H

# Chapter 2: Monitoring Devices

## 2.1 The Details Tab

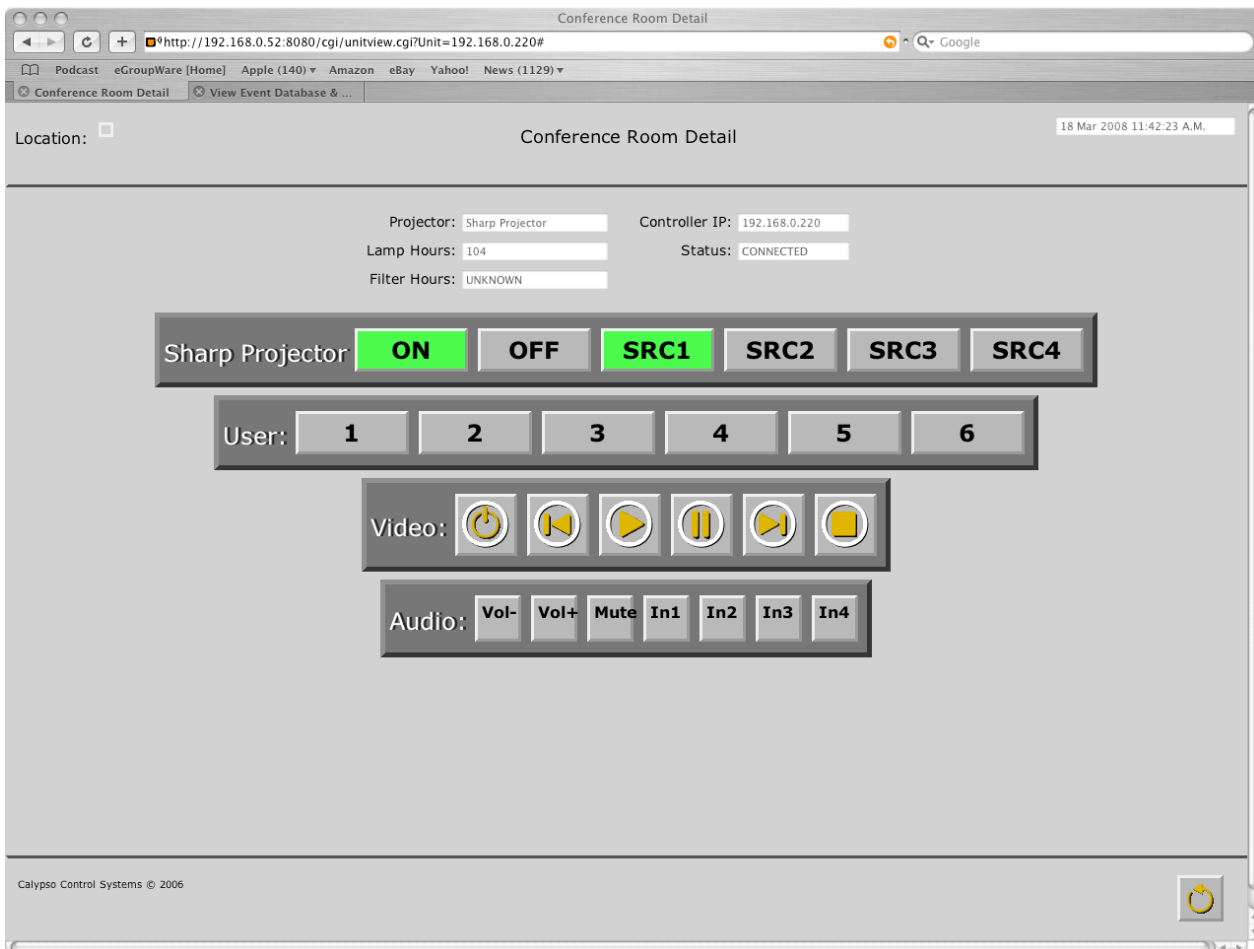
After you've added and configured all the devices you want to monitor you should see them in the list in the *Main Maestro* window (See Fig. I). The **Indicator Lights** should show you the basic status for each projector in the list.



Room/Unit	Detail	Online	Power	Lamp	Fltr	Msg	Timer
Conference Room						<input type="checkbox"/>	<input type="checkbox"/>

Fig. I

Double Click the **Detail Button** to access the *Detail Window* (See Fig. J) which will give you detailed status and basic control of the devices connected to the ION-LT2. You will also be able to access your user-defined commands set in *Preferences*.



Conference Room Detail

Location:  Conference Room Detail 18 Mar 2008 11:42:23 A.M.

Projector: Sharp Projector Controller IP: 192.168.0.220  
Lamp Hours: 104 Status: CONNECTED  
Filter Hours: UNKNOWN

Sharp Projector **ON** OFF SRC1 SRC2 SRC3 SRC4

User: 1 2 3 4 5 6

Video:

Audio: Vol- Vol+ Mute In1 In2 In3 In4

Calyppo Control Systems © 2006

Fig. J

In an effort to keep network traffic to a minimum we've designed the Maestro to only poll devices when specifically asked. When you open the *Details Page* you'll notice the **[Reload]** button in the lower right corner (See Fig.K). When you first open the page you should click the **[Reload]** button to populate the data in the form. The status of various information reflected on the page DOES NOT update automatically; it is only updated when the user invokes an action. You will need to click the **[Reload]** button again to update the form to be sure the information is accurate at any given time.



Fig. K

## Calypso Control Systems 3-year Product Warranty Statement

This Non-Transferable warranty is provided to original purchasing end user, herein referred as “customer”, of Calypso Control Systems product line defined as: Pro I/O, ION-e, ION-LT1, ION-LT2, UT-500, ION-4s, ION-8r, ION-16i, CB-1000, CR-1200R, CA-500, CA-1000, and CA-1050, herein referred as “product”.

This warranty is applicable to product sold or distributed to customer by an authorized Calypso Control Systems Dealer, OEM, Value Added Reseller or sold directly to the end user by Calypso Control Systems, LLC. This warranty becomes effective from the moment the end user completes purchase and receives product. This warranty shall remain in effect for 3 years from the moment of purchase as long as the original customer of the product continues to own and use the product. This warranty does not apply to accessories such as power supplies and cables, which carry standard 12-month manufacturer warranties.

### Terms

Calypso Control Systems warrants that product shall be materially free of defects in material and workmanship under normal use and service during the warranty period. In the event that Calypso Control Systems receives notice from the customer during the warranty period that product does not conform to this warranty, Calypso Control Systems shall, at its sole option, either repair or replace the non-conforming product. The warranty on the replacement or repaired product shall continue for the duration of the original warranty. All returned product becomes the property of Calypso Control Systems.

### Procedures

A product may only be returned with the prior written approval of Calypso Control Systems. Such approval shall reference a Return Material Authorization number (RMA) issued by authorized Calypso Control Systems technical support personnel. Transportation costs, if any, incurred in connection with the return of a defective item to Calypso Control Systems shall be borne by the Customer. Transportation costs incurred in connection with the re-delivery of a repaired or replaced item to the Customer shall be borne by Calypso Control Systems. However, such costs shall be borne by the Customer if Calypso Control Systems, reasonably determines that the product is not defective. If Calypso Control Systems determines, in its sole discretion, that the allegedly defective product is not covered by the terms of the warranty provided hereunder, or that a warranty claim is made after the warranty period, the cost of repair by Calypso Control Systems, including all shipping expenses, shall be reimbursed by the Customer. Calypso Control Systems shall have no liability with respect to data contained in any system returned to Calypso Control Systems.

### Exclusions

The foregoing warranties and remedies are for the Customer’s exclusive benefit and are non-transferable. Any and all warranties shall be void regarding System components that are damaged or rendered unserviceable by: (1) acts or omissions of non-Calypso Control Systems personnel; (2) misuse, theft, vandalism, fire, water, or other peril; (3) alterations of or additions to the System or any element thereof performed by personnel not certified by Calypso Control Systems to perform such alterations and additions or (4) the Customer’s failure to operate the product in conformance with Calypso Control Systems published operating parameters, including environmental specifications.

**Disclaimer of Warranty**

TO THE EXTENT ALLOWED BY APPLICABLE LAW, THE LIMITED WARRANTIES REFERRED TO IN THE PARAGRAPHS ABOVE SHALL BE IN LIEU OF ALL OTHER WARRANTIES WHETHER EXPRESSED, IMPLIED, STATUTORY, OR OTHERWISE. Calypso Control Systems, LLC SPECIFICALLY DISCLAIMS ANY IMPLIED WARRANTIES OF MERCHANTABILITY OR FITNESS FOR A PARTICULAR PURPOSE.

**Limitation of Liability**

TO THE EXTENT ALLOWED BY APPLICABLE LAW, Calypso Control Systems, LLC AND ITS SUPPLIERS EXCLUDE THEMSELVES FROM ANY LIABILITY FOR ANY LOST REVENUE OR PROFIT, LOSS OF BUSINESS, LOSS OF INFORMATION OR DATA, OR FOR SPECIAL, INDIRECT, CONSEQUENTIAL, INCIDENTAL, OR PUNITIVE DAMAGES OF ANY KIND CAUSED OUT OF OR IN CONNECTION WITH THE SALE, INSTALLATION, MAINTENANCE, USE, PERFORMANCE, FAILURE, OR INTERRUPTION OF ITS PRODUCTS, EVEN IF Calypso Control Systems, LLC AND ITS AUTHORIZED RESELLERS HAVE BEEN ADVISED OF THE POSSIBILITY OF SUCH DAMAGES. IN NO EVENT SHALL Calypso Control Systems, LLC OR ITS SUPPLIER'S TOTAL LIABILITY TO THE CUSTOMER, WHETHER IN CONTRACT NEGLIGENCE, STRICT LIABILITY, TORT OR OTHERWISE, EXCEED THE PRICE PAID BY THE CUSTOMER. THE FOREGOING LIMITATIONS SHALL APPLY EVEN IF ANY REMEDY PROVIDED HEREIN SHALL FAIL ITS ESSENTIAL PURPOSE. THIS LIMITATION OF LIABILITY, HOWEVER, WILL NOT APPLY TO ANY CLAIMS FOR PERSONAL INJURY.